

35<sup>th</sup> INTER UNIVERSITY  
EAST ZONE YOUTH FESTIVAL

2019-20

★ ★ ★ **RGU** ★ ★ ★

# KARMOTSAV

**11<sup>th</sup> to 15<sup>th</sup> November, 2019**

ORGANIZED BY



**ROYAL GLOBAL UNIVERSITY**

— GUWAHATI —

Betkuchi, NH 37, Guwahati – 781035, Assam  
[www.rgu.ac](http://www.rgu.ac)

Under the aegis of



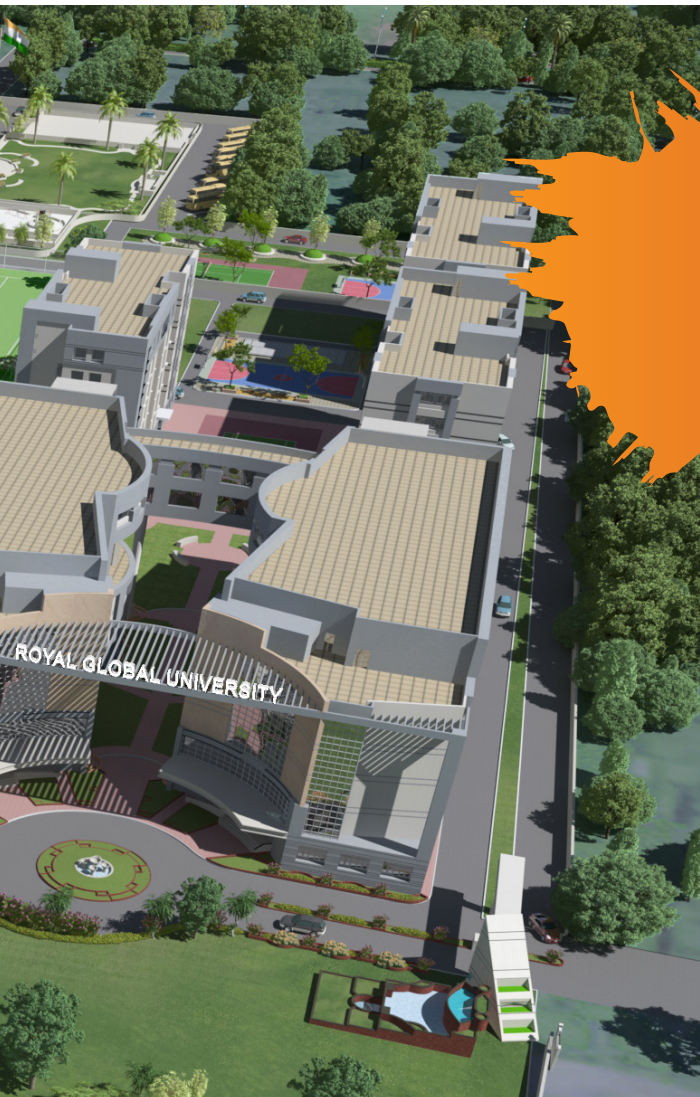
New Delhi  
[www.aiu.ac.in](http://www.aiu.ac.in)





The Assam Royal Global University (RGU) (erstwhile Royal Group of Institutions, established in 2009) was established by 'The Assam Royal Global University Act 2013', a legislature passed by the Govt. of Assam. Located against the picturesque backdrop of Tirupati Balaji Temple on National Highway 37, The Assam Royal Global University stands high with its virtues of excellence and a humble contribution to the society at large.

The Campus is more than 27 acres of land and about 12 lakh square feet built up centrally air-conditioned area available for running various courses. With experienced faculty and world class infrastructure & facilities, RGU is striving to be one of the finest Private Universities of the country. RGU offers a unique educational experience that prepares the next generation of global citizens to lead and make a difference in the world. With its talented and motivated student-body and accomplished faculty, RGU is one of the leading universities in the North Eastern region that maintains a particular commitment to exceptional undergraduate and postgraduate instructions. RGU ensures that its students are transformed into well-rounded, industry-ready individuals, who are equipped to take on leadership responsibilities. RGU stands to be recognized for its world-class infrastructure, cultural events, campus recruitment programmes and activities, expert students, and updated facilities. We take pride in announcing that with 15 years of legacy in education,



RGU promises to stand as an educational hub par-excellence.

The first academic session of RGU started from July 2017. Within a span of just two years, RGU grew in leaps and bounds and is offering more than 90 programs in various disciplines like Engineering, Management, Commerce, Architecture, Fashion Design, Fine Arts, Pure Sciences, Life Sciences, Bio Sciences, Environmental & Earth Sciences, Mass Communication and Journalism, Pharmacy, Nursing, Hotel Management, Travel & Tourism, Law etc. This allows the Undergraduates and Post Graduates to have variety of options/disciplines to choose from.

## UNIVERSITY ANTHEM

*Hail Royal Global University.....  
By the bank of mighty Brahmaputra  
And under the shelter of Nilachal  
There stands the temple of wisdom  
Royal Global University*

*In the City of Eastern Light  
Colours of blue and orange spread insight  
To dream and walk the way to right  
Soar in the sky to a new height  
Shine on Royalites.....shine on.....*

*Lighting up the young minds  
To lead the world with all might  
Hail Royal Global University  
Endowing a new sense of curiosity  
And let the excellence prevail on  
Shine on Royalites.....shine on.....*

*As long as the mighty river flows  
Citadel of learning will enlighten the globe  
History will keep echoing the songs of yore  
With the marks of lives that remain on the shore  
Shine on Royalites.....shine on.....  
Shine on Royalites.....shine on.....  
Shine on Royalites.....shine on.....  
.....shine on.....shine on.....shine on.....*



## CONTENTS

Ethos of RGU-KARMOTSAV	5
Letters to Universities/Institutions in East Zone of India by the Vice-Chancellor	6
Invitation to Universities/Institutions in East Zone of India by the Cultural Coordinator	7
Organizing Committee	9
Important Guidelines for registration and Participation	10
Events at a Glance	16
Event's Rules and Regulations	18
Checklist	27
Contact Us	28



35<sup>th</sup> INTER UNIVERSITY  
EAST ZONE YOUTH FESTIVAL 2019-20

★ ★ ★ **RGU** ★ ★ ★

# KARMOTSAV

RGU-KARMOTSAV, the 35th Inter University East Zone Youth Festival (UNIFEST) for the year 2019-2020 will be held at The Assam Royal Global University Guwahati from 11<sup>th</sup> November to 15<sup>th</sup> November, 2019. The festival will be organized under the aegis of Association of Indian Universities (AIU). UNIFEST is a festival of the youth and provides a unique platform for showcasing their immense talents. The Assam Royal Global University welcomes all students to the 35<sup>th</sup> East Zone Inter University Youth Festival.

RGU-KARMOTSAV aims to embark on an odyssey of discovery by serving as a definitive platform to help participants deep dive into the cultural plethora of the world. The fest focusses on to create and revive the spirit of youth, with a perfect mix of learning and entertainment. It will help students to stage their talent and get recognition on a greater scale.

## ETHOS OF RGU-KARMOTSAV

Actions affect life and positive Karma is the moral force that orders the universe, it's the power that keeps the world in motion and keeps society ticking. The entire universe conspires to give the best only to those who dream and work, and strive passionately. As they say, it's better to conquer yourself than to win a thousand battles. If work is life, let's all commit towards it and celebrate progress in unison, RGU-Karmotsav, "Karma He Pradhan Hain"!





To  
**The Vice-Chancellor /Registrar/ Dean, Students Welfare/Cultural Coordinator,  
All Universities/Institutions of East Zone, India**

Sir/Madam,

Greetings!

We are delighted to inform you that the Association of Indian Universities (AIU), New Delhi has given an opportunity to The Assam Royal Global University, Guwahati, Assam to host the 35<sup>th</sup> Inter University East Zone Youth Festival 2019-20 "RGU-KARMOTSAV" scheduled from 11<sup>th</sup> - 15<sup>th</sup> November, 2019.

The Assam Royal Global University (RGU) is a state private University established by The Assam Royal Global University Act 2013, notified by the Government of Assam Gazette on 23/8/2013, which started its first academic session from July 2017. Within a span of just two years, RGU grew in leaps and bounds and is offering more than 90 programs under its different school of studies.

We would like to extend a cordial invitation to you for the RGU-KARMOTSAV, 35<sup>th</sup> Inter University East Zone Youth Festival 2019-20 and invite the teams to be a part of this prestigious mega event. Various events in Music, Dance, Theatre, Literary and Fine Arts shall be organized simultaneously at different venues in the RGU campus/Royal Knowledge Park. Such festivals enable a suitable platform to youth to exhibit their talent and create cultural awareness in society.

We request you to register your entries in the prescribed format, on or before 31<sup>st</sup> October, 2019 (without late fine) or 2<sup>nd</sup> November, 2019 (with late fine) to confirm your participation. This will help us in facilitating accommodation and local transportation.

We look forward to your full support and cooperation in making the 35<sup>th</sup> East Zone UNIFEST a grand success.

All the information regarding registration, events, rules of events, etc. is available on the website of the university [www.rgu.ac](http://www.rgu.ac)

*Warm Regards*

Prof. (Dr.) S.P Singh  
Vice-Chancellor  
The Assam Royal Global University





To,

**Registrar/Dean/Director/Students Welfare Officer/Cultural Coordinator  
All Universities/Institutions of East Zone, India**

Subject: Invitation to participate in 'RGU-KARMOTSAV', 35<sup>th</sup> Inter University East Zone Youth Festival 2019-20

Dear Sir/Madam

Greetings from The Assam Royal Global University, Assam!

We are pleased to inform you that the Association of Indian Universities (AIU), New Delhi has entrusted The Assam Royal Global University, Guwahati, Assam for hosting the 35<sup>th</sup> Inter University East Zone Youth Festival 2019-20 during 11<sup>th</sup> - 15<sup>th</sup> November 2019.

We express our deep gratitude to Association of Indian Universities for providing us this opportunity and extend our hospitality to delegates from all corners of the country.

In view of this, we request you to send teams from your University/Institution to participate in various events of the Youth Festival as per the conditions chartered by AIU. The details regarding the festival including participation, venue, rules & regulations, eligibility, registration fee, accommodation, event guidelines and other forms (Forms I to IV) are enclosed herewith. You are requested to download all the forms from our website [www.rgu.ac](http://www.rgu.ac)

You are requested to register the contingent from your University/Institution as early as possible but not later than 31<sup>st</sup> October 2019 (without late fine) or 2<sup>nd</sup> November, 2019 (with late fine). The brochure and the forms are available in the RGU website [www.rgu.ac](http://www.rgu.ac). The forms have to be downloaded and the duly filled, signed with seal copy of the forms along with the proof of payment of registration fee has to be scanned and e-mailed to [registrar@rgu.ac](mailto:registrar@rgu.ac) and [karmotsav@rgu.ac](mailto:karmotsav@rgu.ac). The hard copy of the filled forms and the receipt of the payment made has to be couriered to '*Ms. Angira Mimani, Registrar & Cultural Coordinator, Royal Global University, Betkuchi, NH 37, Guwahati-781035, Assam*'.

All the updates including steps for registration, instructions, rules & regulations, important announcement etc. is available on the RGU's official website [www.rgu.ac](http://www.rgu.ac)





## REGISTRATION FEE:

Registration fee Rs. 1000/- (Rupees one thousand only) per participant will be charged from the participants, accompanists and officials of the University/Institution contingent. Payment of registration fee can be made through electronic transfer only along with registration formalities.

## IMPORTANT DATES FOR REGISTRATION:

31<sup>st</sup> October 2019: Last date to e-mail the duly filled scanned forms and proof of payment of registration fee, without the late fine.

2<sup>nd</sup> November 2019: Last date to e-mail the duly filled scanned forms and proof of payment of registration fee, with late fine.

We cordially invite you to be a part of RGU-KARMOTSAV through your participation in various events and celebrate the spirit of cultural diversity. We look forward to an active participation by your students in various categories.

We look forward to you for your full hearted support and co-operation in making this event a great success.

Sincerely yours

### **Angira Mimani**

Cultural Coordinator, RGU-KARMOTSAV  
& Registrar, The Assam Royal Global University  
(M): +91-9435105609  
(E): registrar@rgu.ac

### **Banani D. Hazarika**

Organizing Secretary,  
RGU-KARMOTSAV  
(M): +91-8638084364  
(E): karmotsav@rgu.ac





## ORGANIZING COMMITTEE

**Prof.(Dr.) S.P. Singh**  
(Hon'ble Vice-Chancellor, RGU)  
Patron

**Ms. Angira Mimani**  
(Registrar, RGU)  
Cultural Coordinator / Head of the committee

**Prof. (Dr.) Anuradha Devi**  
(Dean, RSAPS)  
Advisor

**Ms. Vanita Agrawal**  
(Asstt. Professor & Advisor, EE, RSET)  
Advisor

**Ms. Banani D. Hazarika**  
(Asstt. Professor, RSL)  
Organizing Secretary

**Mr. Ayushman Devraj**  
(Lecturer, RSL)  
Joint Secretary

**Ms. Dipika T. Agarwal**  
(Asstt. Registrar)  
Joint Secretary - Vice Chancellor Office

**Ms. Indrakshi B.**  
(Sr. Manager, PR)  
Coordinator

**Dr. Devika Phukan**  
(Dy. Dean, RSAPS)  
Member & Coordinator -  
Discipline & Security

**Dr. Debarati Mitra**  
(Asstt. Professor, RSAPS)  
Member & Coordinator -  
Discipline & Security

**Mr. N.C.Gogoi**  
(Sr. Manager, S&V)  
Member & Coordinator -  
Discipline & Security

**Dr. Samuel L. Chuango**  
(Asstt. Professor, RSHSS)  
Member & Coordinator -  
Musical Events

**Ms. Florence H. Rabha**  
(Asstt. Professor & Head, Electronic  
Media & Anchoring, RSCOM)  
Member & Coordinator -  
Dramatics Events

**Ar. Gautam Sarma**  
(Professor (Design Chair), RSA)  
Member & Coordinator -  
Dramatics Events

**Mr. Sumanta D.  
Chowdhury**  
(Teaching Asstt., RSFA)  
Member & Coordinator -  
Fine Arts Events & Decoration of  
the campus

**Dr. Jasmine A. Chowdhury**  
(Asstt. Professor, RSL)  
Member & Coordinator -  
Literary Events

**Mr. Vijay Sharma**  
(Sr. Manager, F&A)  
Member & Coordinator -  
Transportation & Finance

**Mr. Manoj Patwari**  
(Chief Estate Manager)  
Member & Coordinator - Logistic  
Support for campus  
arrangements

**Mr. Somiran Buragohain**  
(Asstt. Manager)  
Member & Coordinator -  
Printing & Logistics

**Ms. Ankita G. Agarwal**  
(Asstt. Professor, CSE, RSET)  
Member

**Prof. (Dr.) Soumitra Sen**  
(i/c Dean, RSTTM & RSHM)  
Member

**Ar. Siddhartha Deb**  
(Asstt. Professor, RSA)  
Member

**Ms. Ritu Batra**  
(Asstt. Manager)  
Member

**Mr. Bijoy S. Kalita**  
(Asstt. Manager, IT)  
Member & Coordinator -  
IT support

**Ms. Anjali Goswami**  
(Asstt. Manager)  
Member



## IMPORTANT GUIDELINES FOR REGISTRATION AND PARTICIPATION

### Participation

The Universities/Institutions of the East Zone are invited for participation in RGU-KAR-MOTSAV, the 35<sup>th</sup> East Zone UNIFEST 2019-20.

### Eligibility Rules

1. Only bonafide, full time student, who is enrolled for a degree or post graduate degree or diploma course which is of a minimum duration of one academic year and whose examination is conducted by the University subsequent to passing the 12th class examination.

Students of open Universities shall be considered to be bonafide students and shall be eligible to participate provided they fulfill other condition. However students enrolled in correspondence course in Institute / Centres of Universities, casual students, external students and students pursuing bridge course shall not be eligible.

2. All students for participating in the Inter University Youth Cultural Activities shall fulfill the following conditions:
  - a. Not more than 7 years have elapsed since a student passed the examination qualifying him/her for first admission to a degree or diploma course of a University or college affiliated to a University.
  - b. Only students, who are less than 25 years of age as on 15<sup>th</sup> November 2019 can participate.
  - c. Further, students can participate for one year more than the normal length of the academic programme which he / she is following.
3. A student employed on full time basis shall not be eligible to participate.
4. A student shall not be allowed to represent more than one University/Institute during a single academic year.
5. Provisional admission to a course of a University or Institute shall not make the student eligible to represent the University in the Inter University Youth Cultural Activities.
6. In case of a student migrating from one University to another his / her migration case will be considered eligible only after his / her admission in the new University is regularized and he/she is admitted as a bonafide student by the new University.
7. A student, who has participated in Solo events of the Inter University National Youth Festival for four years, will not be permitted to participate in the UNIFESTS.

### Explanation

1. For the purpose of computing years of eligibility, "one year will cover" means the academic year in which the cultural activity is held irrespective of whether the students result is declared or not. It will normally be extended from June / July of one year to 12 calendar months to the next year.
2. The participation in Inter University Youth Cultural Activities to a "period of one year



more than the length/ duration of academic course" means that the students pursuing a three year degree programme (i.e. B.A, B.Sc., B.Com., etc.) can participate for four years, while a student pursuing four year programme (i.e. B.E., B.Tech. etc.) can participate for five years.

### **Identity Card/Eligibility Certificates/Educational Mark Sheets/ Current Fees Receipt of Respective University.**

1. The participating students must carry their Identity Card (with photograph) issued by their respective Universities / Institutes. The team managers/ contingent In-charge(s) should submit valid Identity cards of all members of the contingent, for verification at the time of registration.
2. The Eligibility Certificates signed by the Vice Chancellor / Director / Dean / Principal of the University / Institution / and countersigned by the Dean of Students' Welfare / Cultural Coordinator / Registrar is a must and should tally with the above documents.
3. All students will have to carry the photocopies of following documents as proof of age and eligibility, duly attested by their current Head of University/Institution
  - a) copy of 10<sup>th</sup> Std., 12<sup>th</sup> Std. marksheet/certificate
  - b) mark sheets of previously passed University exam (i.e. student studying 3rd year of college need to carry the final mark sheet of 2nd year). However students studying in 1<sup>st</sup> year of college can carry the mark sheet of 10<sup>th</sup> and 12<sup>th</sup> STD.
  - c) current year University/Institution fee receiptStudents are also advised to keep the scanned copy of the aforementioned documents in their e-mail ids/pen drive and make it readily available, if required.
4. The contingent In-charge(s) are required to carry the photocopy of receipt of submission of Registration Fee of current year to AIU, duly attested by the Head of University/Institution.

### **Disqualification for violation of eligibility rules:**

1. Any disqualification of a participant on ground of ineligibility will result in the automatic scratching of the contingent for that academic year. The contingent shall also be debarred from participating in the Youth Cultural activities to be held in the following years.
2. A participant disqualified on the grounds of ineligibility shall not be permitted to participate in Inter University Youth Cultural Activities in the next year.

### **Strength of Contingent:**

1. Maximum size of the contingent will not be more than 42 (forty two) per University/ Institution, including the Contingent In-Charge(s).
2. Accompanists would preferably be the students, who will be given participation certificates. However, outsiders may be allowed if suitable students are not available. At the most 8 outsider accompanists are allowed, who will be included in the contingent of 42.





3. Participating universities/institutions are strongly requested not to bring any extra person. No extra person shall be entertained at any cost. They will be required to make their own arrangements for accommodation, fooding etc.

### Contingent In-charge(s):

Participating university/institution shall send a maximum of two persons as contingent In-charge, who will maintain a liaison with the Organizing Committee of RGU. Lady contingent leader is essential for girl participants. However, the contingent In-charges will be included in the contingent of 42.

### List of Forms

- » FORM I: Team Registration Form
- » FORM II: Eligibility Certificate of Participant and Accompanist
- » FORM III: Event Wise Composite Form
- » FORM IV: Final Registration Form

### Registration Fee:

Registration fee Rs. 1000/- (Rupees one thousand only) per participant will be charged from the participants, accompanists and officials of the University/Institute contingent. Payment of registration fee can be made through electronic transfer only along with the registration formalities.

The last date of the payment of Registration Fee (without fine) is 31<sup>st</sup> October 2019.

No University/Institute shall be eligible to participate in the 35<sup>th</sup> East Zone UNIFEST 2019-20 without payment of the Registration Fee. Universities/Institutions are allowed to register with a late fine of Rs. 200/- per participant, accompanist and official of the University/Institute contingent till 2<sup>nd</sup> November 2019.

### Registration has to be done online and offline

- » Please visit [www.rgu.ac](http://www.rgu.ac)
- » Download the brochure and the forms. A copy of the duly filled forms (Form I, II & III) and proof of payment of registration fee, signed with seal of the concerned authority has to be scanned and e-mailed to registrar@rgu.ac and karmotsav@rgu.ac.
- » Also the hard copy of the filled forms along with the receipt of the payment made has to be sent to 'Ms. Angira Mimani, Registrar & Cultural Coordinator, Royal Global University, Betkuchi, NH 37, Guwahati - 781035, Assam'. In case of non-receipt of the payment details and the duly filled forms, the registration will not be acknowledged and the amount paid will be forfeited.
- » The last date for registration is 31<sup>st</sup> October 2019 (without late fine) and 2<sup>nd</sup> November, 2019 (with late fine).
- » The Form IV, duly filled and signed with seal of concerned authority has to be submitted at the registration desk at the venue.



---

## Fee Payment

Payment of registration fee has to be made through electronic transfer only. The NEFT/RTGS details are:

Account name: ROYAL GLOBAL UNIVERSITY

A/c No.: 4651002100004685

IFSC No.: PUNB0465100

Branch: BHANGAGARH

Bank: PUNJAB NATIONAL BANK

The payment receipt clearly mentioning the account/University/Institution name and other bank details alongwith the scanned copy of the registration form, has to be emailed to registrar@rgu.ac and karmotsav@rgu.ac on or before the last date i.e. 31<sup>st</sup> October 2019/ 2<sup>nd</sup> November 2019 (along with late fine).

## Caution Money

A sum of Rs. 5000/- (Rupees five thousand only) refundable caution money has to be deposited by each team at the Registration Desk. In the event of any damage/loss of the RGU property caused by any participant, appropriate amount shall be charged and deducted from the Caution Money.

The Caution Money has to deposited through a Demand Draft drawn in favor of 'The Registrar, Royal Global University', payable at Guwahati.

## Travelling Expenses:

The participating university/institute will have to bear the travelling expenses. University/Institute may avail of Railway concession from, if they desire, as festivals, are a part of the National Integration camp scheme.

However, RGU will provide pick up and drop facilities from railway station/airport/bus stand. This facility is available only once for the whole contingent of a University/Institute and not for individual participants/accompanists/small groups.

## Accommodation & Clothing

Free board and lodging would be provided to the participating teams.

Students and contingent In-charge(s) will be provided humble accommodation in hostels along with RGU hostellers or may be provided accommodation in classrooms/halls in academic blocks. The AIU Officials, Judges and invited guests will be accommodated in the RGU Guest House or nearby Hotels.

The temperature in the month of November in Guwahati is pleasant. Participants and officials are advised to bring sufficient warm light bedding, blankets/rags, woollen clothes, sweaters, jackets, socks, mosquito net, medicines, locks etc. The participant



and officials are advised to get inoculated against cholera and typhoid.

## Food

Food, only vegetarian, shall be provided from the dinner of November 10, 2019 till the breakfast of November 16, 2019.

## Dress Code

Students are advised to be in proper dress code especially outside the hostel premise. Proper dress code means no shorts or revealing garments.

## Sub-Committees

RGU would form various Sub-Committees for the smooth conduct of the Festival which would function under an Organizing Committee. The Sub-Committee may include Reception, Transport, Infrastructure, Programme, Publicity, Inaugural / Valedictory. There would also be a Control Room to control the festival activities.

## Cultural Procession

- a. A cultural Procession/ March Past of participating Universities/Institutes will be organized on inaugural day before the formal inaugural ceremony.
- b. The Team managers should bring two Flags, Posters / Banners of their respective University/Institute and deposit one Flag at the time of registration and retain the Banner, Posters and one flag with them for display during the Procession (Rally) only.
- c. Participating teams are also advised to bring their Local / Regional Costumes for the purpose of reflecting their culture in cultural Procession/ March Past.

## Venue

All activities of the RGU-KARMOTSAV will be conducted within The RGU Campus/ Royal Knowledge Park.

## Event properties

RGU will provide basic and routine properties like sofa, table, chair, bed and any other similar property required for events. For more specific requirements, you may discuss and decide with Mr. Somiran Buragohain, Asstt. Manager, Mobile no. +91 8811003151

## Scoring

The methodology of assessing and awards of points by the judges will be based on the parameters announced by the AIU.



## Issue of Photo IDs

The ID cards will be prepared beforehand with the information filled by each participant /accompanist/official during registering themselves online. The cards, counter signed by the contingent In-charge(s) will be issued to each participant on 11<sup>th</sup> November 2019 at the registration desk.

## Disclaimer of Liability

Competitors participate in the Youth Fest entirely at their own risk. The organizing authority/ The Assam Royal Global University and Association of Indian Universities will not accept any liability for material damage or personal injury or death sustained in conjunction with, or prior to or during, or after the Youth Fest.

## Prohibited Activities and Penalty System

- a. Incorrect information/Suppression of information related to eligibility of participants
- b. Consumption of liquor / smoking/ non-veg food (inside the campus);
- c. Eve teasing;
- d. Attempt to influence the Judges;
- e. Going to the press/media against RGU on any controversial issue;
- f. Indecent behaviour inside and or outside the campus and venue and at the place of stay.

Those violating these clauses shall be liable to disciplinary action which may be to the extent of debarring the concerned University/Institution Team Official from participation in the Inter University Youth Activities for a period as may be determined by the AIU Cultural Committee.

## Other Rules:

1. Recorded music/ audio cassettes are not permitted during the Folk/ Tribal, Creative Dance and Classical Dance.
2. Participating universities/institutes are informed that the use of fireworks/ arms is strictly prohibited. However, if it is unavoidable for cultural performance, their imitation may be used with the prior permission of the organizing committee.

**Please note:** In order to have creativity, the Cultural Contingents are requested to present new cultural items and not to repeat the same, which they presented in the preceding year.

## EVENTS AT A GLANCE



S.No.	Items	Partic- ipants (P)	Accompa- nists (A)	No. of P+A	Min. Time	Max. Time
<b>1. MUSIC</b>						
a.	Classical Vocal Solo (Hindustani or Karnatak)	1	2	3	8 mins	10 mins
b.	Classical Instrumental Solo (Percussion)	1	2	3	8 mins	10 mins
c.	Classical Instrumental Solo (Non-Percussion)	1	2	3	8 mins	10 mins
d.	Light Vocal (Indian) *	1	2	3	4 mins	6 mins
e.	Western Vocal (Solo) *	1	2	3	4 mins	6 mins
f.	Group Song (Indian)	6	3	9	8 mins	10 mins
g.	Group Song (Western)	6	3	9	8 mins	10 mins
h.	Folk Orchestra	9	3	12	8 mins	10 mins
i.	Western Instrumental (Solo)	1	2	3	6 mins	8 mins
<b>2. DANCE</b>						
a.	Folk / Tribal Dance	10	5	15	8 mins	10 mins
b.	Classical Dance	1	3	4	12 mins	15 mins
<b>3. LITERARY EVENTS</b>						
a.	Quiz	3	-	3	-	-
b.	Elocution *	1	-	1	4 mins	5 mins
c.	Debate *	2	-	2	4 mins	5 mins







4. THEATRE						
a.	One Act Play	9	3	12	25 mins	30 mins
b.	Skits	6	3	9	8 mins	10 mins
c.	Mime	6	2	8	4 mins	5 mins
d.	Mimicry *	1	-	1	4 mins	5 mins
5. FINE ARTS						
a.	On the Spot Painting	1	-	1	2 hrs	2.5 hrs
b.	Collage	1	-	1	2 hrs	2.5 hrs
c.	Poster Making	1	-	1	2 hrs	2.5 hrs
d.	Clay Modeling	1	-	1	2 hrs	2.5 hrs
e.	Cartooning	1	-	1	2 hrs	2.5 hrs
f.	Rangoli	1	-	1	2 hrs	2.5 hrs
g.	Spot Photography	1	-	1	2 hrs	2.5 hrs
h.	Installation	4	-	4	2 hrs	2.5 hrs
i.	Mehendi	1	1	2	2 hrs	2.5 hrs

**Please note:**

Five Events which have been Star Marked (\*) above shall get 15 seconds Grace Time after the completion of the Maximum Time Limit. However, for all other Events the Grace Time Limit shall be 30 Seconds.



## EVENT'S RULES AND REGULATIONS

### 1. MUSIC

#### a. Classical Vocal Solo (Hindustani or Karnatak)

- » Only one entry per university/institution is allowed. Duration of performance- 10 min.
- » Time for stage/ instruments setting is maximum 5 minutes.
- » Two accompanists are permitted per team.
- » Item can be presented in either Hindustani or Karnatak style.
- » Movie songs are not allowed under this item.
- » Sufficient thought and care must be exercised in the choice of Raga and composition.
- » Judgement will be based on the qualities like, taal, selection of raga, composition and general impression.
- » The additional instructions, if any, will be announced on the spot.

#### b. Classical Instrumental Solo (Percussion - Tal Vadya)

- » Only one entry per university/institution is allowed. Duration of performance- 10 min.
- » Time for stage/ instruments setting is maximum 5 minutes.
- » Two accompanists are permitted per team.
- » Participants must bring their own instruments.
- » Item can be presented in either Hindustani or Karnatak style.
- » Judgement will be based on the qualities like, taal, selection of raga, composition and general impression.
- » The additional instructions, if any, will be announced on the spot.

#### c. Classical Instrumental Solo (Non-Percussion – Swar Vadya)

- » Only one entry per university/institution is allowed. Duration of performance- 10 min.
- » Time for stage/ instruments setting is maximum 5 minutes.
- » Two accompanists are permitted per team.
- » Participants must bring their own instruments. However Casio is not allowed.
- » Instruments of western origin adapted to the India Raga system are allowed.
- » Item can be presented in either Hindustani or Karnatak style.
- » Judgement will be based on the qualities like, taal, selection of raga, composition and general impression.
- » The additional instructions, if any, will be announced on the spot.

#### d. Light Vocal (Indian)

- » Only one entry per university/institution is allowed.
- » Time for stage/ instruments setting is maximum 2 minutes.
- » Two accompanists are permitted per team.



- » Duration of the song shall be between 4 to 6 minutes.
- » Only non-film songs/ geet/ ghazal/ bhajan/ shabad and abhangas can be presented.
- » Judgement will be made on the qualities like swara, taal, selection of raga, composition and general impression.
- » The additional instructions, if any, will be announced on the spot.

#### **e. Western Vocal (Solo)**

- » Only one entry per university/institution is allowed.
- » Time for stage/ Instruments setting is maximum 2 minutes.
- » Two accompanists are permitted per team.
- » Duration of the song shall be between 4 to 6 minutes.
- » Language of the song shall only be English.
- » Judgement will be made on the qualities like, composition rhythm, coordination and general impression.
- » The additional instructions, if any, will be announced on the spot.

#### **f. Group Song (Indian)**

- » Only one entry per university/institution is allowed.
- » A team has to present two songs, one patriotic and another will be a folk song.
- » Maximum 6 singers in a group and number of accompanists playing instruments shall be three.
- » The group songs should be taken from Indian songs which can be in regional language.
- » No movie song should be presented as part of the group song.
- » Maximum time allowed for the group song is 10 minutes which does not include setting time. The setting time for a group shall not exceed 4 minutes.
- » Judging of this item will be on the basis of quality of singing only and not on make-up, costumes and actions of the team.
- » The additional instructions, if any, will be announced on the spot.

#### **g. Group Song (Western)**

- » Only one entry per university/institution is allowed.
- » Maximum 6 singers in a group and number of accompanists playing instruments shall be three.
- » The group song should be taken from English language.
- » Maximum time allowed for the group song is 10 minutes which does not include setting time. The setting time for a group shall not exceed 5 minutes.
- » Judging of this item will be on the basis of quality of singing only and not on make-up, costumes and actions of the team.
- » The additional instructions, if any, will be announced on the spot.



#### **h. Folk Orchestra**

- » Each university/institution can send only one team.
- » The team shall consist of up to 12 participants.
- » The group can consist of all boys or all girls or combination of both.
- » The minimum duration of the performance will be 7 minutes and the maximum will be 10 minutes.
- » This does not include setting time which shall not be more than 5 minutes.
- » Up to three professional accompanists are allowed who should be in different dress from the student participants so that they could be easily identified.
- » The professional accompanists shall sit / stand separately from the participants and shall not lead the team.
- » The team may present preferably those folk tunes which are recognized as folk tunes of the state to which the university/institute belongs.
- » The additional instructions, if any, will be announced on the spot.

#### **i. Western Instrumental (Solo)**

- » A participant shall play western music on any percussion or nonpercussion instrument.
- » The duration of the performance is minimum 6 and maximum 8 minutes. The computation of time shall start immediately after the final announcement by the organizers.
- » Maximum 2 accompanists are allowed.
- » The participant is to perform any one genre/style or fuse various genres/ styles of western music.
- » Three minutes of setting time will be given to each participant.
- » The additional instructions, if any, will be announced on the spot.

## **2. DANCE**

#### **a. Folk / Tribal Dance**

- » Only one entry per university/institution is allowed.
- » Maximum 10 participants allowed per team. The group can consist of all boys or all girls or combination of both.
- » The number of accompanists permissible is five.
- » The dance can be either primitive or a folk dance (Indian Style) but not a classical one.
- » Duration of dance should not be more than 10 minutes.
- » Three copies of a brief note giving the theme and the text of song if any, is to be submitted along with the entry form at the time of registration.
- » The participating team will be responsible for removal of their sets / properties etc. immediately after the completion of their performance.
- » Judgement will be based on the basis of Rhythm, Formation, Expression, Costumes, Make-up, Sets on Overall Effect.
- » Time for sets/ instruments setting is maximum 5 minutes.
- » The additional instructions, if any, will be announced on the spot.

### **b. Classical Dance (Indian)**

- » Each university/institute can send only one entry.
- » The classical dance can be from any of the approved schools of dance. Such as Kathak, Kathakali, Bharat Natyam, Manipuri, Kuchipudi, Mohinittam and Odissi etc.
- » Participant will be allowed up to 15 minutes including time for preparation.
- » Maximum three accompanists are permissible.
- » Judgement will be based on the qualities like Tal, Technique and Rhythm, Abhinaya or expression, costumes, footwork and general impression etc.
- » Three copies of a brief note on the description of dance story involved in it, if any, and of the accompanying song, with its meaning in Hindi or English must be submitted at the time of registration.
- » The additional instructions, if any, will be announced on the spot.

## **3. LITERARY EVENTS**

### **a. Quiz**

- » Each university/institute can send a team of three persons.
- » There will be a written preliminary round and teams will be selected for the final.
- » Finals will be oral with audio- visual questions.
- » The specific rules regarding evaluation procedure, time to reply a particular answer and the type of round will be given before the actual start of the competition.
- » The additional instructions, if any, will be announced on the spot.

### **b. Elocution**

- » Each university/institute will be represented by one speaker.
- » Medium of expression will be Hindi or English.
- » Each speaker will be allowed to speak for maximum five minutes.
- » Subject / Topic of Elocution will be announced in the managers meeting or on the whatsapp group of managers that will be created on the day of arrival.
- » The performance will be judged in one language.
- » The item shall be prose or poetry and not song.
- » The sequence of speakers will be decided by a draw of lots.
- » The additional instructions, if any, will be announced on the spot.

### **c. Debate**

- » Each university/institute will be represented by the two debaters, one will speak FOR, while another will speak AGAINST the motion.
- » Medium of expression will be in Hindi or English.
- » Topic of the Debate will be announced 24 hours in advance.
- » Each debater will be allowed to speak for maximum 5 minutes.
- » Paper reading is not allowed.



- » The competitor from each university/institute will speak FOR or AGAINST the topic.
- » The additional instructions, if any, will be announced on the spot.

## 4. THEATRE

### a. One Act Play

- » Only one entry shall be accepted from each university/institution.
- » The duration of the play should not exceed 30 minutes.
- » Time will be counted as soon as the signal is given or the team starts giving introduction, whichever is earlier. Empty stage to empty stage shall be followed strictly.
- » For stage setting and removal of set and properties, up to 10 minutes will be given after taking charge of the stage.
- » The number of participants should not exceed 9 members and the maximum number of accompanists should not exceed 3.
- » The participating team shall bring their own set/stage property, make up material etc. Light and general property such as ordinary furniture may be provided on advance information.
- » Participants may speak in Hindi, English or any regional language of India. In case the language is a regional one, the synopsis of the play with translation in English or Hindi must be submitted to the In-charge(s) of the competition on the day of registration.
- » The participating team must report to the In-charge(s) of the competition at least two hours before the presentation of the play.
- » Judgement will most likely be based on the qualities of the play like theme, work on acting, stage craft, design and general impression etc.
- » Decision of the panel of judges will be final and binding upon all.
- » Accompanists will either speak from the background or will play upon musical Instruments for background music. They shall not appear on the stage.
- » The additional instructions, if any, will be announced on the spot.

### b. Skit

- » Only one team per university/institute will be allowed.
- » Maximum of 6 participants are allowed to participate in this item.
- » Maximum time allotted for each team is 10 minutes.
- » Use of make-up, drapery and background music is allowed. Personal remarks, aspersions and character assassination are not allowed.
- » Participating team should submit three copies of the synopsis of the theme of Skit, along with language of presentation (Hindi or English) on the day of registration.
- » The item will be judged on the qualities like theme, work on acting, stage craft, design and general impression.
- » Vulgarity or bitter insinuations in presentation should be avoided. Only innocent satire or humour is expected.
- » The additional instructions, if any, will be announced on the spot.

### c. Mime

- » Only one entry per university/institute will be entertained.
- » Maximum of 6 participants are allowed per team.
- » Judgement will be based on the qualities like idea, creativity of presentation, use of make-up, music and general impression.
- » Duration of performance shall be maximum of 5 minutes.
- » The additional instructions, if any, will be announced on the spot.

### d. Mimicry

- » Each student artist shall be given maximum time of 5 minutes.
- » Participants may mimic sound of machines and speeches of well-known persons including film personalities.
- » Only one entry per university/institute allowed.
- » Judgement will be based on imitating skill, variety of voices and presentation.
- » The additional instructions, if any, will be announced on the spot.

## 5. FINE ARTS

### a. On the Spot Painting

- » Each university/institute will be represented by a single participant.
- » Item will be conducted on the spot and participants will be requested to do painting on the subject given by the In-charge(s) of the competition.
- » Duration will not be more than 2 hours 30 minutes.
- » Size of the painting will be half imperial size drawing paper i.e. 22 inches X 15 inches.
- » Painting can be done in oil, water, poster or pastel colours.
- » Candidate shall bring their own material like brushes, paints etc. Only the paper/ sheet will be provided by RGU.
- » The additional instructions, if any, will be announced on the spot.

### b. Collage

- » Each university/institute will be represented by one participant.
- » Collage will be prepared on the spot on the given topic/ subject.
- » Duration will not be more than 2 hours 30 minutes.
- » Participants shall bring their own scissors, pasting and other material required for the contest.
- » Collage has to be prepared from old magazines. RGU will provide the drawing paper of the size 22" X 15".
- » The additional instructions, if any, will be announced on the spot.

### c. Poster Making

- » Each university/institute will be represented by one participant.
- » Item will be conducted on the spot and the participants will be requested to make poster on the subject / topic / theme given by the In-charge(s) of the competition.



- » Duration will not be more than 2 hours 30 minutes.
- » Participants shall bring their own material. Only the Drawing paper/ Sheet 22" x 15" will be provided by RGU.
- » The additional instructions, if any, will be announced on the spot.

#### **d. Clay Modeling**

- » Each university/institute will be represented by a single participant.
- » Item will be conducted on the spot.
- » Duration will not be more than 2 hours 30 minutes.
- » Topics/ size and other specific rules shall be announced on the spot.
- » Clay will be provided by RGU.
- » The additional instructions, if any, will be announced on the spot.

#### **e. Cartooning**

- » Each university/institute will be represented by a single participant.
- » Subject will be given on the spot.
- » Duration will not be more than 2 hours 30 minutes.
- » Participants shall bring their own material. Only the Drawing paper 22" x 15" will be provided by RGU.
- » The additional instructions, if any, will be announced on the spot.

#### **f. Rangoli**

- » Each university/institute will be represented by one participant.
- » Duration will not be more than 2 hours 30 minutes.
- » Participants shall bring their own material. This art is known differently in various regions such as Mandna, Alpana, Alekhan, Kolam, Rangoli, etc. For this the medium and form for expression can be free hand, pictorial and descriptive.
- » Only one medium shall be used – Poster Colours or Flower Petals or Saw-dust or Pulses or Rice without pasting.
- » The Participants shall have to prepare a rangoli within the space provided by RGU.
- » The additional instructions, if any, will be announced on the spot.

#### **g. Spot Photography**

- » Each university/institute will be represented by one participant.
- » The participant has to bring his/her own digital camera.
- » The digital camera should have a memory card which will be formatted by the judges before the commencement of the contest.
- » The time limit will be 2.30 hours.
- » The participant has to capture 5 photographs on the theme announced on the spot by the judges.
- » No mixing, matching or morphing of photographs will be permitted.
- » Software such as Photoshop etc. for enhancing images not permitted.
- » RGU will have all rights for the use of these pictures as and when they deem fit.



- » Digital images are evaluated on the basis of
  - Impact,
  - Composition
  - Technical Quality
  - Suitabilityfor the specific theme.
- » The additional instructions, if any, will be announced on the spot.

#### **h. Installation**

- » This is a group activity and as such 4 participants are allowed per university/ institution.
- » Participants have to install or create an atmosphere related with the subject or title of the installation.
- » The size of the installation should be maximum 5'X5'X5'.
- » Participants can use all the materials which they will use in other art compositions like cartooning, painting, rangoli, poster, collage and clay modelling.
- » Participants can use waste materials also which is available in the surroundings or can take any material from outside also.
- » Participants are not allowed to use any already composed images or forms available in the market. They should compose or create their own image with the raw material.
- » The additional instructions, if any, will be announced on the spot.

#### **i. Mehendi**

- » Each participating institution/university can depute only 1 student participant.
- » The participant has to draw the Mehendi on palm side of both hands of the model. The model should be the student of the same university.
- » The Mehendi must be extended to the palm side forearm with minimum six inch length.
- » The participant has to bring their own Mehendi and other materials required for it.
- » Use of handprint, any kind of mold and any kind of decorative material is not allowed.
- » The total duration for this item should not exceed 2.5 hours.
- » The due credit will be given on originality, creativity, decorative art with aesthetic sense.
- » The additional instructions, if any, will be announced on the spot.



---

## JUDGEMENT AND APPEALS

1. The participants are requested to carefully study the rules and regulations for the various events given above.
2. The decision of the Judges appointed for different events shall be final and binding upon all. It is expected that their judgement will be respected.
3. In case of any dissatisfaction, the matter may be referred to the Jury of Appeals.
4. The protest, if any, should be lodged with the Observer of the Competition within one hour of the end of the competition. No protest shall be entertained on matters regarding judgement. Protests can be entertained on matters relating to violation of rules or improper conduct of the contest. There will be a protest fee of Rs.200/- only. This fee will not be refunded unless the protest has been upheld by the Jury of Appeals. No appeal shall lie against the decision of the Jury of Appeals.



## CHECKLIST

To be sent for Registration of a Contingent on or before 30<sup>th</sup> October 2019 (without late fine) or 2<sup>nd</sup> November 2019 (with late fine)

S.No.	Particulars	To be Submitted
1.	Registration Form I - Team Registration Form	The forms have to be downloaded from the university website <a href="http://www.rgu.ac">www.rgu.ac</a> .
2.	Registration Form II - Eligibility Certificate	The duly filled form and the proof of payment of registration fee, signed with seal of the concerned authority has to be scanned and e-mailed to <a href="mailto:registrar@rgu.ac">registrar@rgu.ac</a> and <a href="mailto:karmotsav@rgu.ac">karmotsav@rgu.ac</a>
3.	Registration Form III - Event Wise Composite Form	
4.	Registration Fee	
		The hard copies of the above scanned documents also have to be sent to 'Ms. Angira Mimani, Registrar and Cultural Coordinator, Royal Global University, Guwahati – 781035, Assam'

To be submitted at the Registration Desk on Arrival

S.No.	Particulars	To be Submitted at
1.	Registration Form IV - Final Registration Form	Registration Desk
2.	Flag - 2 no., Banner - 2 no., Poster - optional	1 no. Flag to be submitted at the Registration Desk
3.	2 nos. passport size photographs of each member of a contingent with the name of the member and name of the University/Institution clearly written at the back	Registration Desk
4.	Photocopies of below mentioned documents, duly attested by the current Head of University/ Institution: <ul style="list-style-type: none"> <li>a. Class X and Class XII certificate/marksheet</li> <li>b. Marksheet of previously passed university exam</li> <li>c. Current year university fees receipt</li> <li>d. Receipt of submission of Registration Fees of current year to AIU</li> <li>e. Identity Card (with photograph) issued by the respective University/Institution</li> </ul>	Registration Desk
5.	English and Hindi Transcript of Theatrical and Dance Events	Registration Desk



## CONTACT US



Ms. Angira Mimani Registrar, RGU & Cultural Coordinator, RGU	+91-9435105609
Ms. Banani D. Hazarika Organizing Secretary – Organizing Committee	+91-8638084364
Mr. Ayushman Devraj Joint Secretary – Organizing Committee	+91-8876197064
Ms. Dipika T. Agarwal Joint Secretary (Vice Chancellor Office) – Organizing Committee	+91-9678009412
Ms. Indrakshi B. Coordinator – Organizing Committee	+ 91-9707683013
Mr. Somiran Buragohain Coordinator – Logistic support (for event properties only)	+91-8811003151

**Correspondence Address:** Angira Mimani, Registrar & Cultural Coordinator, Royal Global University, Betkuchi, NH 37, Guwahati – 781035, Assam

**Contact Email ID:** [registrar@rgu.ac](mailto:registrar@rgu.ac); [karmotsav@rgu.ac](mailto:karmotsav@rgu.ac)





## FORM I - TEAM REGISTRATION FORM

1. Name of the University / Institution:

2. Number of Participants :

Details	Male	Female	Total
Student Participants			
Accompanists (Students + Professionals)			
Team Manager / Contingent In-charge			
Total composition of contingent			

(Total number of members in a contingent should be within 42)

3. Name of the Head of Institution and Students' Welfare .....

Address .....

Phone no. ....

E-mail .....

4. Name of the Contingent In-Charge(s) .....

Address .....

Phone no. ....

E-mail .....

### Travel Plans

1. Arrival at The Assam Royal Global University, Guwahati, Assam

Bus  Train  Flight  Other

Arrival Date: ..... Time: ..... Flight/Train no.: .....

Departure Date: ..... Time: .....

Bus  Train  Flight  Other

Signature of Director of Students' Welfare / Cultural Coordinator / Registrar  
(Seal)



## FORM II - ELIGIBILITY CERTIFICATE

Participants & Accompanists

(Make photocopy of this form for each participant & Accompanist)

**A. General Information:**

1. University/Institution Name: .....
2. Address of University/Institution: .....

**B. Personal Information (to be filled in BLOCK LETTERS)**

1. Name of Participant .....
2. Gender: Male/Female/Others.....
3. Father / Mother's Name.....
4. Date of Birth as per X (10th) Board Certificate (attach attested copy).....DD/MM/YY
5. Age as on 15<sup>th</sup> November 2019, ..... Years ..... Month ..... Days
6. Year of passing XII (+2) standard ..... DD/MM/YY
7. Course in which presently studying: Course ..... Subject .....
- (Attach attested copy of identity Card) Roll No ..... Regis. No. ....
8. Department .....
9. Whether you are a participant / Accompanist.....
10. Email ID ..... Mobile No. ....
11. No. of times participated in Zonal / National Festivals: .....
12. Item participated in .....

Paste a Passport photograph signed and sealed by Head of University/Institution

The above particulars furnished by me are correct and true to the best of my knowledge.

Date:

.....  
(Signature of Student Participant / Accompanist)

[A student is eligible if (i) he / she does not exceed the age of 25 years as on 15<sup>th</sup> November 2019 (ii) He / She has not completed 8 years after passing the X class and 6 years after passing XII (iii) He/ she has been enrolled in a full – time degree course or diploma course of over 1 year duration]

Certified that the particulars provided above have been verified and found to be correct to the best of our Knowledge.

Head of University/Institution  
Signature, Seal & Date

Registrar/ DSW  
Signature, Seal & Date

**For Office Use Only:**

(Eligible/Not Eligible (Reason, if not eligible): .....

Signature of the Head / Registration Committee .....



### FORM III - EVENT WISE COMPOSITE ENTRY FORM

Name of the University/Institution .....

Name of the Contingent In-charge(s).....

(Use separate form for each Group of events, i.e. – Music / Dance/ Theatrical / Fine Arts/ Literary)

Sl. No.	Name of the participants (Please write in BLOCK letters your name as you would like it to be written on the certificate. Check the spellings)	Date of Birth and Age as on 15 <sup>th</sup> November 2019	Item(s) in which participating as a participant	Item(s) in which participating as an accompanist
1.				
2.				
3.				
4.				
5.				
6.				
7.				
8.				
9.				
10.				
11.				
12.				
13.				
14.				
15.				
16.				
17.				
18.				
19.				
20.				

(Please make copies of this form for additional names)

Contingent In-charge  
Signature

Head of University/Institution/Students' Welfare/Cultural Coordinator  
Signature & Seal

**FOR OFFICE USE ONLY:** Eligible Not Eligible (Reason, if not Eligible): .....

.....

(Authorized Signatory)















# ROYAL GLOBAL UNIVERSITY

— ◀ — GUWAHATI — ▶ —

